

# A PATRICIAN GENEALOGY OF CHILEAN ARCHITECTURE IN THE 20TH CENTURY

## DIEGO GRASS

Profesor, Escuela de Arquitectura  
Pontificia Universidad Católica de Chile,  
Santiago, Chile

### Keywords

Diagram  
Generations  
History  
Aristocracy  
Schools

In ancient Rome, Patricians were those who constituted aristocracy, given their direct – sanguine – relationship with the founding fathers. From this idea, diagramming a genealogy of Chilean architecture not only allows to ‘locate’ each character within her/his networks – whether based on connection, friendship or support – but also allows to ask ourselves how many degrees of separation exist between this supposed aristocracy and the 99 % of those architects that are not on this map.

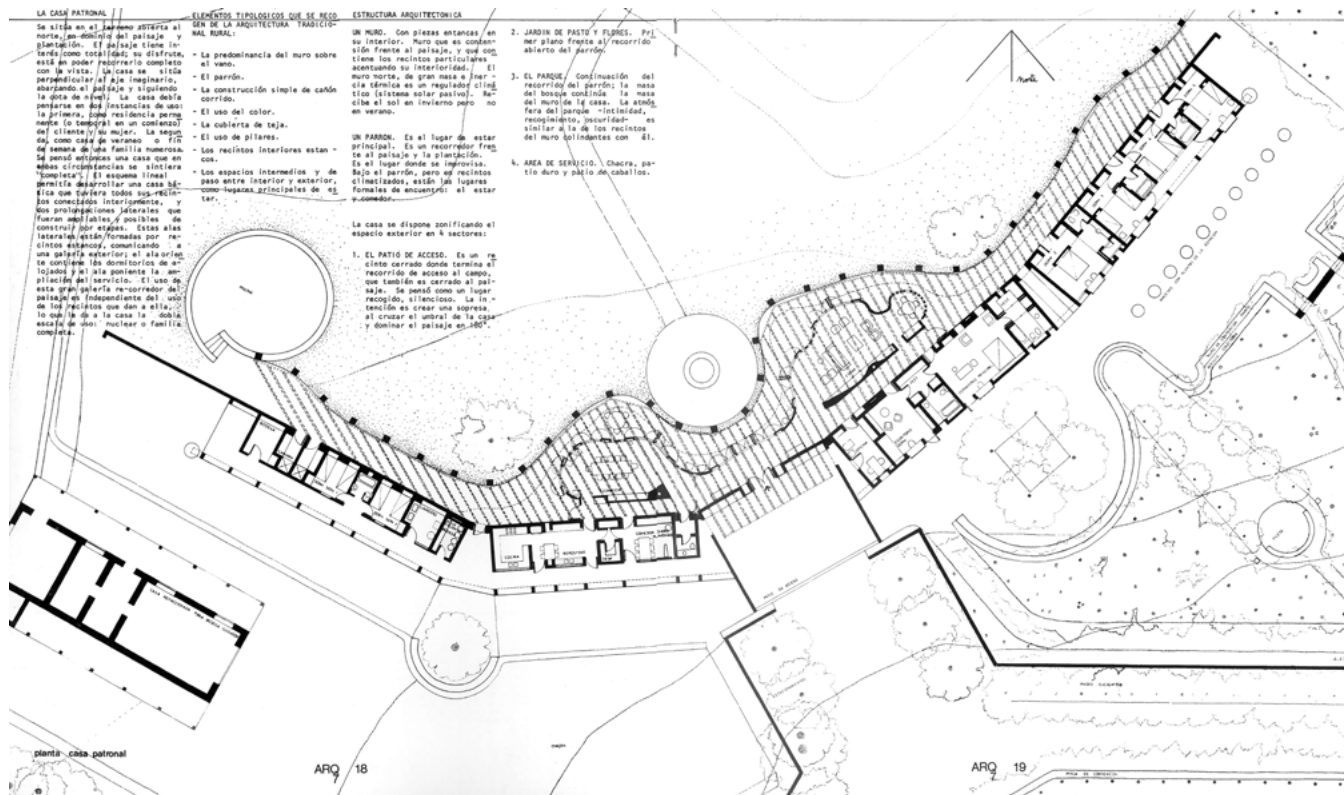
Since the early 1980s, the history of *ARQ* magazine is the history of Architecture at the Pontificia Universidad Católica de Chile (UC). National intersections with the Pontificia Universidad Católica de Valparaíso (PUCV) were frequent in the 80s and 90s. To these were added the intermittent appearances of architectures coming from the ‘rival’ institution, the Universidad de Chile. The School of Architecture of Universidad de Talca is represented only once (by Rodrigo Sheward’s graduation project, published in issue 74). International intersections belong to a separate story and would deserve another genealogical map.

This selection of 10 historical articles is rather inbred. By surveying some important crosses between UC architects born during the 20<sup>th</sup> century, I seek to present what *ARQ* does best. Of all the characters introduced, only two were neither born nor raised in this hotbed

CASA PATRONAL Y EQUIPAMIENTO  
FUNDO AGRÍCOLA EN LA  
PRECORDILLERA / PROYECTO DE  
TÍTULO

Antonia Lehmann  
(Profesor guía / Advisor: Montserrat Palmer)  
1982

Publicado en / Published in  
ARQ 07 (noviembre, 1982): 16-20



(Montserrat Palmer, who studied at the Universidad de Chile and Cazú Zegers, from the PUCV), confirming the exception to the rule.

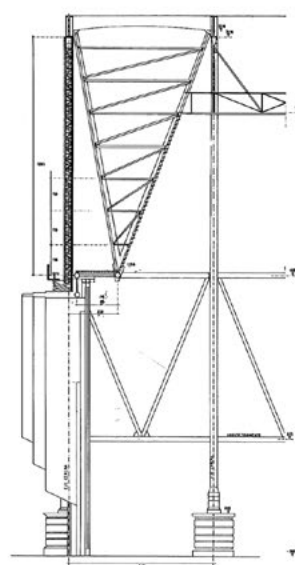
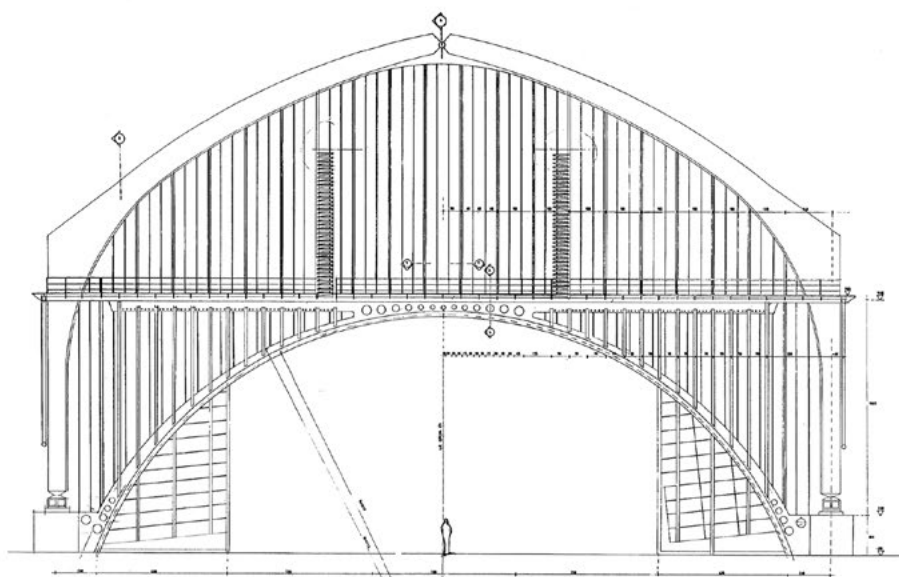
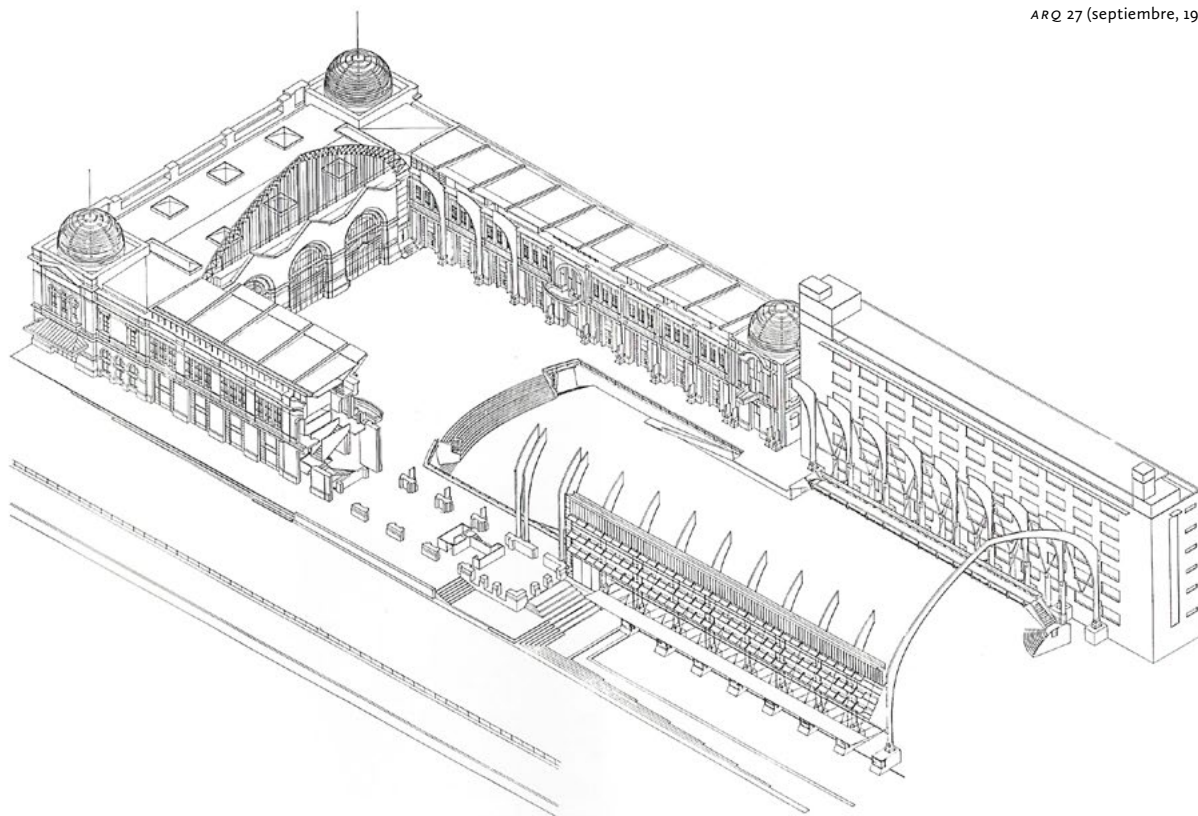
I highlight the forgotten connection between Jorge Elton and Miguel Eyquem or between Sebastián Irrarrázaval, his likely mentor Rodrigo Pérez de Arce and his first partner Guillermo Acuña. I bring forward partnerships that were once a hit, with duos such as José Cruz and Germán del Sol or Arturo Torres and Jorge Christie. I also present uneven learning relationships between architects who seem to be very different: Alejandro Aravena and Fernando Pérez or Sandra Iturriaga and Samuel Bravo.

There are many more relations. To recognize them is to portray a network of private knowledge transfer that, I believe, describes very well everything which will never be published in ARQ, for either being too valuable or too horrifying to be made public. ARQ

**CENTRO CULTURAL ESTACIÓN  
MAPOCHO**

Montserrat Palmer, Teodoro Fernández,  
Rodrigo Pérez de Arce, Ramón López  
1994

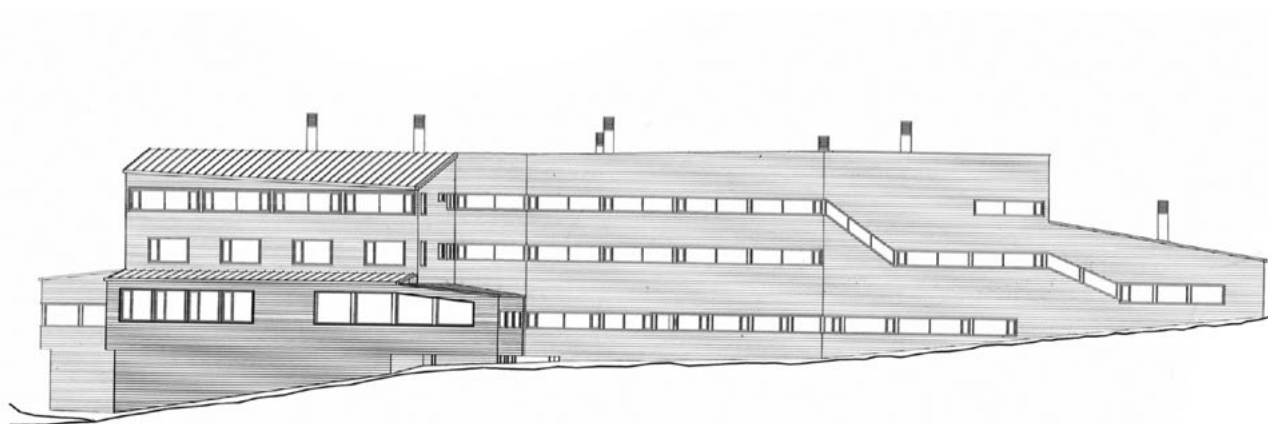
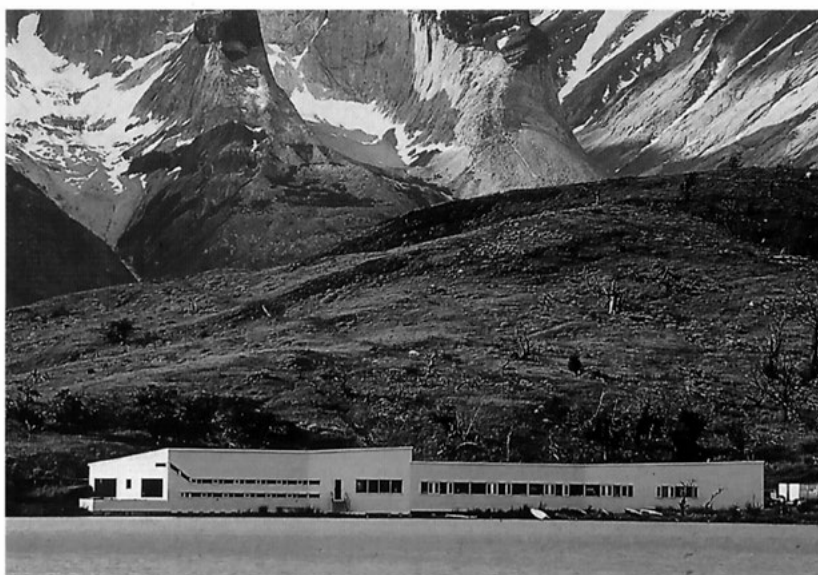
Publicado en / *Published in*  
ARQ 27 (septiembre, 1994): 34-39



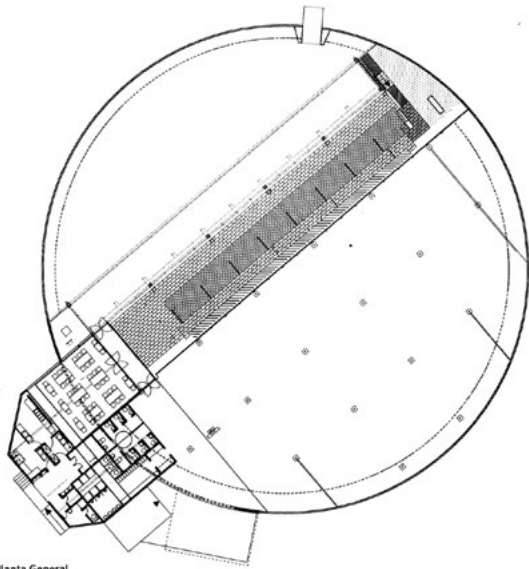
**HOTEL EXPLORA  
PATAGONIA**

José Cruz, Germán del Sol  
1994

Publicado en / *Published in*  
*ARQ* 35 (abril, 1997): 21-27







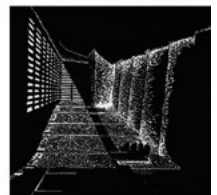
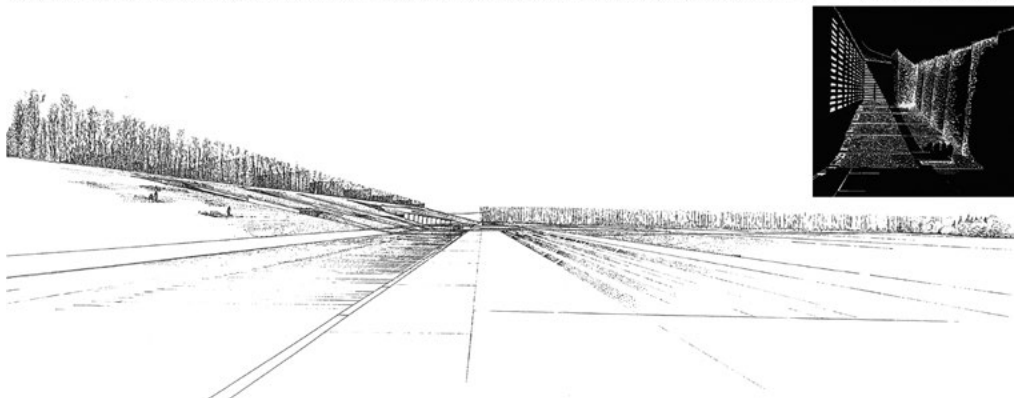
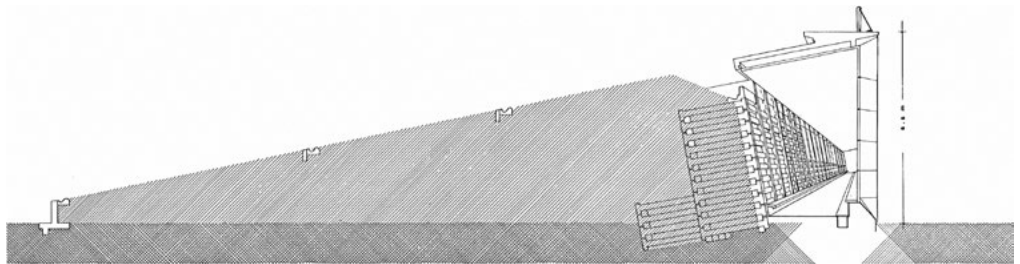
Planta General



**CONDominio PARQUE  
GOLF DE MANQUEHUE**

Luis Izquierdo, Antonia Lehmann,  
Cazú Zegers  
1994

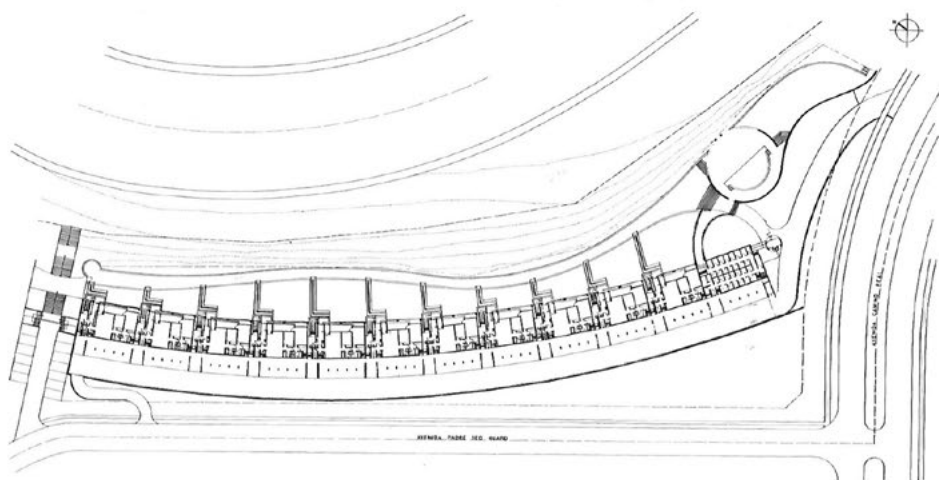
Publicado en / *Published in*  
ARQ 42 (julio, 1999): 41



## SHOWROOM MORO

Guillermo Acuña,  
Sebastián Irarrázaval  
1996

Publicado en / *Published in*  
*ARQ* 36 (julio, 1997): 36-39



## CEMENTERIO EN RECOLETA / PROYECTO DE TÍTULO

Sebastián Irarrázaval  
(Profesor guía / *Advisor*:  
Rodrigo Pérez de Arce)  
1992

Publicado en / *Published in*  
*ARQ* 25 (enero, 1994): 32-34





---

**LODGE ANI NII SHOBO –  
CASA GRANDE DE LA SELVA**

Sandra Iturriaga, Samuel Bravo  
2010

Publicado en / *Published in*  
*ARQ* 78 (agosto, 2011): 68-71







# **LICEO ALEMÁN DEL VERBO DIVINO**

Felipe Assadi, Mathias Klotz, Francisca  
Pulido, Pablo Riquelme, Trinidad  
Schönthaler, Renzo Alvaro  
2008

Publicado en / *Published in*  
*ARQ* 67 (diciembre, 2007): 32-41





HOTEL ANTUMALAL

Jorge Elton  
1950

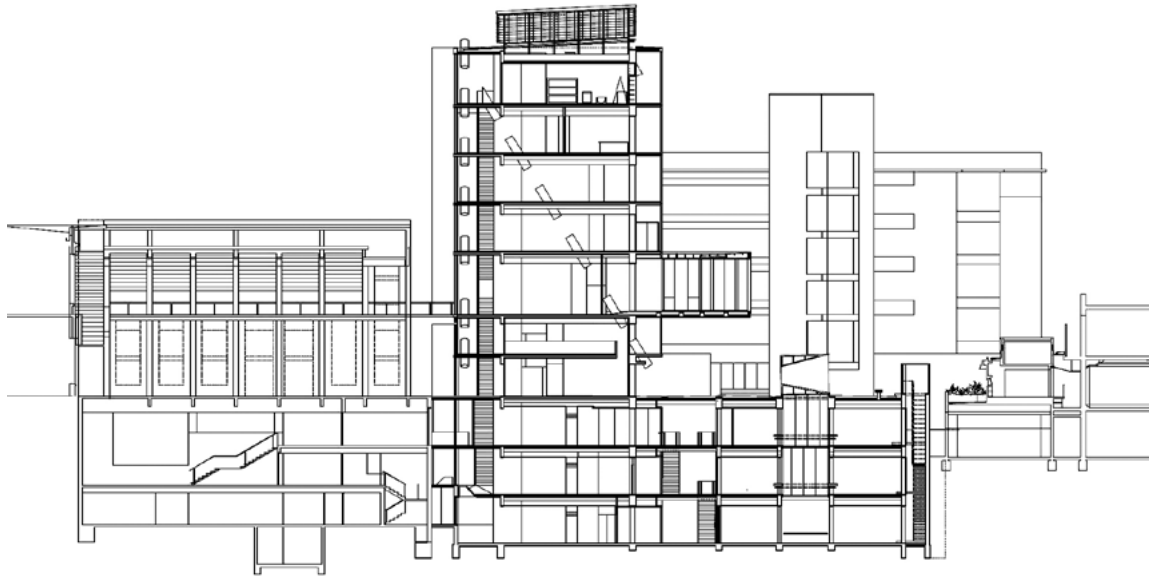
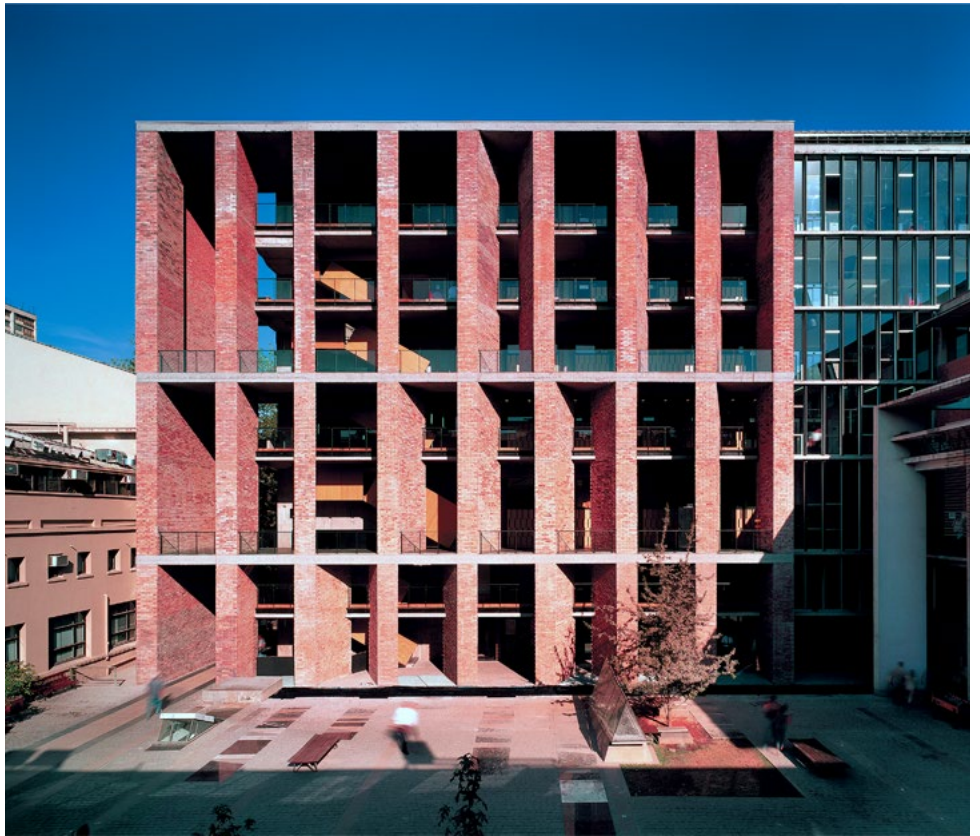
Publicado en / Published in  
ARQ 61 (diciembre, 2005):  
64-67



## ESCUELA DE MEDICINA UC

Alejandro Aravena, Fernando Pérez  
Oyarzun, equipo  
2004

Publicado en / *Published in*  
*ARQ* 59 (marzo, 2005): 29-33



**Diego Grass**  
<djgrass@uc.cl>

Architect, Pontificia Universidad Católica de Chile, 2010. Since 2014 is a professor at that same institution. Since 2006 collaborates with Felipe de Ferrari in architectural audiovisual records, founding the OnArchitecture database in 2011 ([www.onarchitecture.com](http://www.onarchitecture.com)). In 2012 founded Plan Común. Has been working on architectural projects together with Thomas Batzenschlager since 2017.