



RECENT GALAXY MERGERS AND RESIDUAL STAR FORMATION OF RED SEQUENCE GALAXIES IN GALAXY CLUSTERS

YUN-KYEONG SHEEN^{1,2}, SUKYOUNG K. YI³, CHANG H. REE¹, YARA JAFFÉ⁴, RICARDO DEMARCO², AND EZEQUIEL TREISTER⁵

¹ Korea Astronomy and Space Science Institute, Daejeon, 305-348, Korea; ykshen@kasi.re.kr

² Departamento de Astronomía, Universidad de Concepción, Casilla 160-C, Concepción, Chile

³ Department of Astronomy and Yonsei University Observatory, Yonsei University, Seoul 120-749, Korea; yi@yonsei.ac.kr

⁴ ESO, Alonso de Cordova 3107, Vitacura, 7630355 Santiago, Chile

⁵ Instituto de Astrofísica, Facultad de Física, Pontificia Universidad Católica de Chile, Casilla 306, Santiago, Chile

Received 2016 January 7; revised 2016 June 1; accepted 2016 June 6; published 2016 August 4

ABSTRACT

This study explored the *Galaxy Evolution Explorer* ultraviolet (UV) properties of optical red sequence galaxies in four rich Abell clusters at $z \leq 0.1$. In particular, we tried to find a hint of merger-induced recent star formation (RSF) in red sequence galaxies. Using the $\text{NUV} - r'$ colors of the galaxies, RSF fractions were derived based on various criteria for post-merger galaxies and normal galaxies. Following k -correction, about 36% of the post-merger galaxies were classified as RSF galaxies with a conservative criterion ($\text{NUV} - r' \leq 5$), and that number was doubled ($\sim 72\%$) when using a generous criterion ($\text{NUV} - r' \leq 5.4$). The trend was the same when we restricted the sample to galaxies within $0.5 \times R_{200}$. Post-merger galaxies with strong UV emission showed more violent, asymmetric features in the deep optical images. The RSF fractions did not show any trend along the clustocentric distance within R_{200} . We performed a Dressler–Shectman test to check whether the RSF galaxies had any correlation with the substructures in the galaxy clusters. Within R_{200} of each cluster, the RSF galaxies did not appear to be preferentially related to the clusters' substructures. Our results suggested that only 30% of RSF red sequence galaxies show morphological hints of recent galaxy mergers. This implies that internal processes (e.g., stellar mass loss or hot gas cooling) for the supply of cold gas to early-type galaxies may play a significant role in the residual star formation of early-type galaxies at a recent epoch.

Key words: galaxies: clusters: individual (Abell 119, Abell 2670, Abell 3330, Abell 389) – galaxies: star formation – ultraviolet: galaxies

1. INTRODUCTION

The origin of residual star formation in early-type galaxies is still under debate. Since the launch of the *Galaxy Evolution Explorer* (GALEX) ultraviolet (UV) space telescope (Martin et al. 2005), it has been discovered that about 30% of massive early-type galaxies at $z < 0.1$ show a hint of recent star formation (RSF) at a level of 1%–3% of their stellar mass (Kaviraj et al. 2007). Galaxy mergers have been suggested as a primary driver of this phenomenon (Yi et al. 2005; Kaviraj et al. 2007). Another reason may be gas cooling in elliptical galaxies (Mathews & Brighenti 2003; Valentini & Brighenti 2015). However, due to the difficulties in detecting signs of galaxy mergers and gas cooling in early-type galaxies, the residual star formation in early-type galaxies has only been investigated in detail for a few individual galaxies equipped with deep optical or X-ray images (Fabbiano & Schweizer 1995; O'Sullivan et al. 2001). Several studies have therefore highlighted the need for deep optical imaging surveys of early-type galaxies (Kaviraj et al. 2009; Salim & Rich 2010).

In Sheen et al. (2012), post-merger galaxies were identified among massive red sequence galaxies ($M_{r'} < -20$) in rich Abell clusters at $z \lesssim 0.1$ using deep optical images. The galaxies' features suggested that they had gone through galaxy mergers relatively recently ($z \lesssim 0.5$). Although their optical colors indicated that they were dominated by old stellar populations, as in typical early-type galaxies, their post-merger features suggested that they may have had a certain level of star formation induced by recent merger events.

We explored the GALEX UV–optical colors of red sequence galaxies in Abell 119, Abell 2670, Abell 3330, and Abell 389

at $z = 0.044, 0.076, 0.089$, and 0.112 , respectively, in order to investigate the relation between recent galaxy mergers and the residual star formation of red sequence galaxies in galaxy clusters. One of the most effective ways to investigate RSF is to measure UV light from the galaxies, as the UV light is very sensitive to the existence of stellar populations younger than 1 Gyr. By combining deep UV and optical images of the four rich Abell clusters, a data set providing robust clues on mass-assembly histories as well as on the star formation histories of red sequence galaxies was established.

The UV–optical data and galaxy samples are described in Section 2. In Section 3, the RSF fractions for post-merger galaxies and normal galaxies are derived under various conditions, including k -correction, RSF criterion, and distance from the cluster center. The morphological properties, stellar populations, and spatial distributions of the RSF galaxies are presented in Section 4, and the results are discussed in Section 5.

2. DATA AND GALAXY SAMPLES

GALEX UV images of three clusters (A2670, A3330, and A389) were taken in the Deep Imaging Survey (DIS) mode to study UV upturn phenomenon in early-type galaxies (Ree et al. 2007). A119 imaging was performed in the Medium Imaging Survey (MIS) mode. The GALEX exposure times for the cluster samples are presented in Table 1. UV catalogs of the target clusters were obtained from the GALEX GR7 Data Release. The Galactic extinction was corrected for GALEX FUV and NUV magnitudes using the formulas

Table 1
GALEX Data Properties

Cluster	EXP _{FUV} (hr)	EXP _{NUV} (hr)	NUV Detection Rates Among RS _{spec} (%)
A119	0.8	0.8	79.1 (53/67) ^a
A2670	6.0	8.6	84.4 (81/96)
A3330	6.3	16.7	85.5 (53/62)
A389	6.0	8.7	94.4 (57/61)
Total	85.3 (244/286)

Note.

^a Galaxy counts are presented in the parentheses.

$A_{FUV} = 8.376 \times E(B - V)$ and $A_{NUV} = 8.741 \times E(B - V)$, as in Wyder et al. (2005).

Optical photometric catalogs were established from the deep optical images taken with the MOSAIC II CCD on the Blanco 4 m telescope at CTIO. The galaxy magnitudes in the g' , r' bands were measured with the Auto_Magnitude (MAG_AUTO) of the SExtractor (Bertin & Arnouts 1996), and their Galactic foreground extinction was corrected using reddening maps from Schlegel et al. (1998). The optical catalogs were then matched with the GALEX UV catalogs using a 6'' matching radius. Figure 1 presents galaxy histograms of MOSAIC II optical catalogs and the matched GALEX UV catalogs. In the figure, the filled histograms represent galaxies matched with valid (note that GALEX photometry failed to derive magnitudes on some detections) NUV magnitudes. NUV detection rates were higher than 50% for galaxies brighter than $r' = 23$ in A2670, A3330, and A389, which were taken in the DIS mode. For A119, which had GALEX images in the MIS mode, the limit for a 50% NUV detection rate was $r' = 21$. To provide a guide for our galaxy samples, the magnitude limit ($M_{r'} < -20$) was approximately calculated using the distance modulus of each cluster (36.25, 37.46, 37.88, and 38.32 for A119, A2670, A3330, and A389, respectively), and was indicated with a dashed line on the figure. Our galaxy samples had magnitudes above and below these limits, as the absolute magnitude of each galaxy was calculated based on its own spectroscopic redshift.

Optical red sequence galaxies were identified from the $g' - r'$ versus $M_{r'}$ color-magnitude relations (CMRs) of the spectroscopic members of the clusters. As introduced in Sheen et al. (2012), the cluster memberships were assigned using the velocity distributions from the spectra taken by a multi-object spectrograph, Hydra, on the Blanco 4 m telescope at CTIO. For A119 and A2670, the spectroscopic catalogs were supplemented with spectroscopic redshifts from the Sloan Digital Sky Survey (SDSS) for missing objects from the Hydra observations. The completeness of the spectroscopic survey for the massive red sequence galaxies ($M_{r'} < -20$ using the distance moduli of the clusters) were 94%, 92%, 81%, and 75% for A119, A2670, A3330, and A389, respectively. The line of sight velocity dispersions (σ_{los}) were 895, 1039, 869, and 873 km s⁻¹, respectively. Cluster memberships were assigned to galaxies within $\pm 3\sigma_{los}$ of the velocity distribution of each cluster. In this paper, we only considered the cluster members with spectroscopic redshifts. Optical CMRs of the spectroscopic cluster members are presented in the top panels in Figure 2. We should mention that our Hydra observations were focused to get cluster memberships of red sequence galaxies

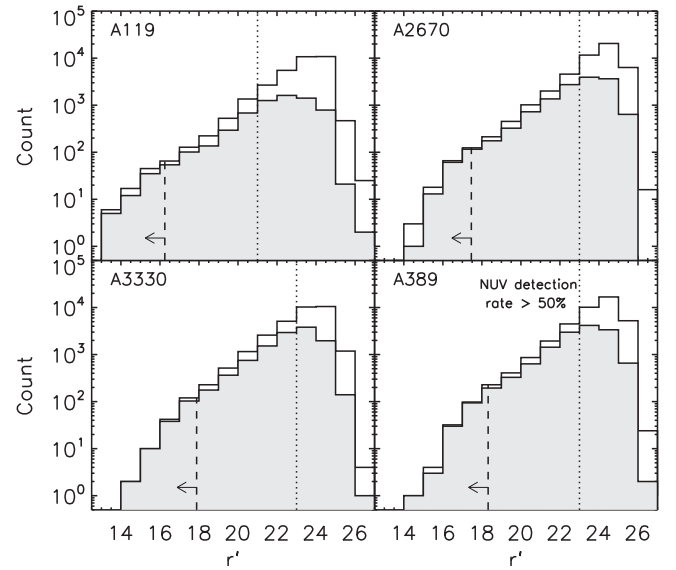


Figure 1. Galaxy histograms from MOSAIC II r' -band deep images for each cluster. The filled histograms show the counts of galaxies among the r' -band galaxies detected in the GALEX NUV band. The vertical dotted line distinguishes the magnitude bins with NUV detection rates higher than 50%. The magnitude limit for this study ($M_{r'} < -20$) was calculated using the central velocity of each cluster, and is indicated with a dashed line. The study's galaxy samples are both above and below these limits, as marked with arrows.

first. Therefore the Hydra redshift catalogs are not complete for galaxies in blue clouds. To begin with, the red sequences were determined through iterative fitting using the 2- σ clipping method. The red sequence, green valley, and blue clouds were then defined according to their $g' - r'$ color ranges as $\pm 3\sigma$, $-3\sigma \sim -5\sigma$, and $< -5\sigma$, respectively, for the best fit of each cluster (the dotted lines in the top panels in Figure 2). We identified 67, 96, 62, and 61 red sequence galaxies from A119, A2670, A3330, and A389, respectively (including 4 galaxies and 22 galaxies from the SDSS spectroscopic redshift catalogs for A119 and A2670). Therefore, our volume-limited red sequence sample included 286 galaxies with a magnitude limit of $M_{r'} < -20$ from the 4 target clusters. Among the 286 red sequence galaxies, 263 have valid NUV magnitudes from the GALEX catalogs.

Prior to UV analysis, we conducted a visual inspection of the photometric apertures used by the GALEX pipeline, as introduced in Yi et al. (2011). This process is critical to the avoidance of contamination from nearby UV-bright objects that were not resolved into separate objects by the pipeline due to the low spatial resolution (1.5 arcsec pixel⁻¹) of GALEX images. Nineteen galaxies, including 3 post-merger galaxies, were rejected from the 263 NUV-detected galaxies. The rejection rate was 7.2% (19/263), which was similar to that found in Yi et al. (2011) for the early-type galaxies in clusters with SDSS data (6.8%, 88/1294). Thus, we obtained 244 red sequence galaxies with robust NUV detections. Henceforth, these volume-limited red sequence galaxies with NUV magnitudes will be called “RSVL” (red sequence volume-limited) samples. The UV-optical color-magnitude relations of the target clusters are presented in the bottom panels of Figure 2. The figure shows that the galaxies lying in a tight red sequence in the optical CMRs are widely spread in UV-optical CMRs.

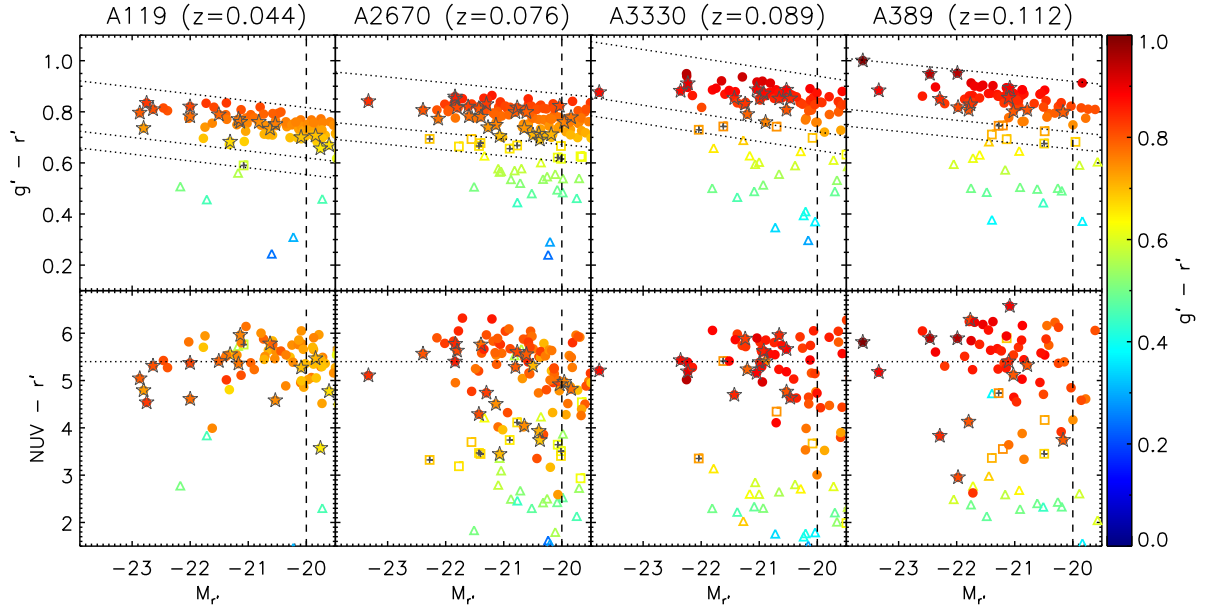


Figure 2. UV-optical color-magnitude relations (CMRs) of target clusters. Only the spectroscopic members are plotted. The symbols are color coded according to their $g' - r'$ colors. The vertical dashed lines mark the magnitude cut ($M_r = -20$) for the volume-limited samples. Top: the optical red sequence, green valley, and blue clouds were defined with their color-magnitude relations of $g' - r'$ vs. M_r , as represented by the dotted lines. We used different symbols for the red sequence (filled circles), green valley (open squares), and blue clouds (open triangles) in the diagrams. The post-merger galaxies identified by Sheen et al. (2012) among the red sequence galaxies were indicated with superimposed open gray stars. The crosses mark green valley galaxies with post-merger signatures. Bottom: UV-optical CMRs of spectroscopic cluster members using *GALEX* UV and Blanco MOSAIC 2 optical images. The meanings of the symbols were the same as for the optical CMRs. The $NUV - r' = 5.4$ color cut was drawn as an RSF criterion adopted from the literature (e.g., Yi et al. 2005 among others).

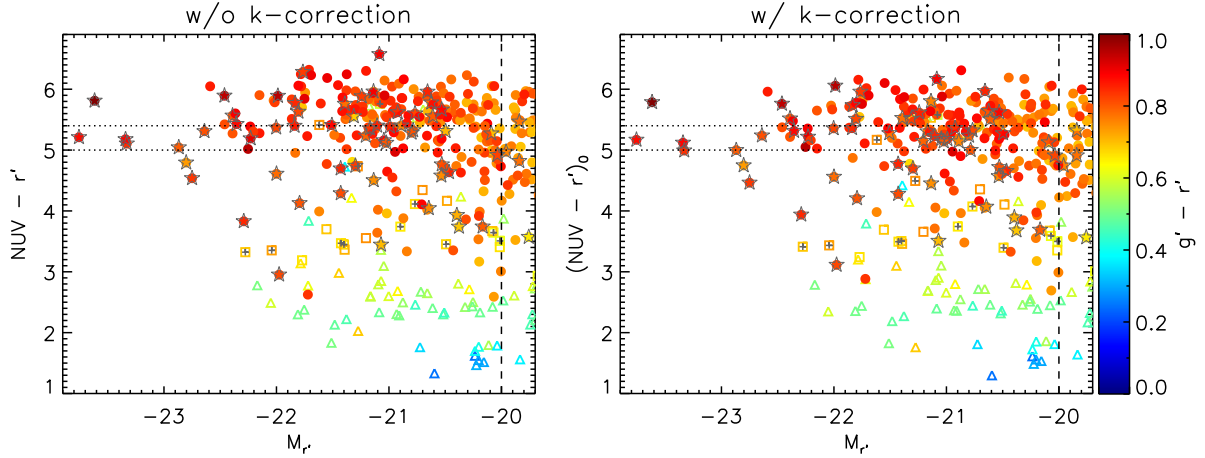


Figure 3. Combined UV-optical CMRs before and after k -correction of $NUV - r'$ colors (left and right). The symbols are the same as in Figure 2. The volume-limited sample cut of ($M_r = -20$) is represented by a dashed line. The conventional RSF cut ($NUV - r' = 5.4$, upper dotted line) was found to be rather generous. $NUV - r' = 5$ (bottom dotted line) appeared to match the optical red sequence galaxies better, especially for the k -corrected $NUV - r'$ colors.

Table 2
The Average RSF Fractions (in Percentages)

Galaxy Samples	w/ k -correction		w/o k -correction	
	$NUV - r' \leq 5.4$	$NUV - r' \leq 5$	$NUV - r' \leq 5.4$	$NUV - r' \leq 5$
Post-mergers	72.4 ± 14.7	36.2 ± 9.2	62.1 ± 13.2	32.8 ± 8.7
Normal galaxies	50.0 ± 6.4	26.3 ± 4.2	41.9 ± 5.7	22.6 ± 3.9
Post-mergers $< 0.5 R_{200}$	70.0 ± 17.2	30.0 ± 9.9	$60.0 \pm 15.5\%$	27.5 ± 9.4
Normal galaxies $< 0.5 R_{200}$	51.1 ± 7.5	25.9 ± 4.8	$43.2 \pm 6.7\%$	21.6 ± 4.3
All RSVL	55.3 ± 5.9	28.7 ± 3.9	46.7 ± 5.3	25.0 ± 3.6
All RSVL ($< 0.5 R_{200}$)	55.3 ± 6.9	26.8 ± 4.4	46.9 ± 6.2	22.9 ± 4.0

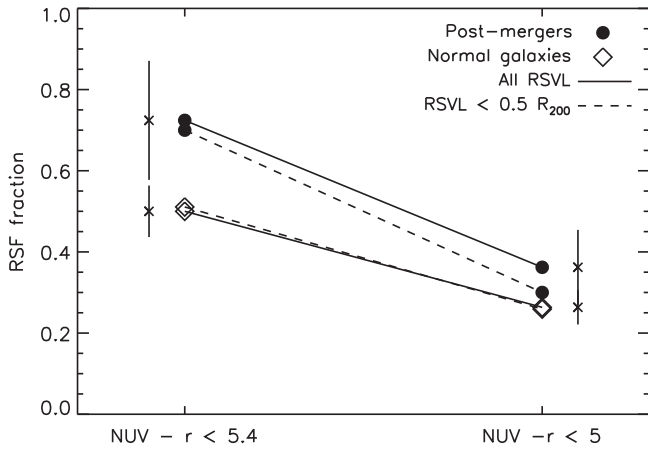


Figure 4. We compared the average RSF fractions using k -correction (presented in Table 3) with different $\text{NUV} - r'$ cuts, and either the full field of view sample or the central ($< 0.5R_{200}$) sample. The error bars are for the fractions with all RSVL samples (solid lines).

3. RSF FRACTIONS

In this work, we used $\text{NUV} - r'$ colors as the only criteria for identifying RSF galaxies among the red sequence galaxies. However, as shown on the optical CMRs in Figure 2, the optical color shifts of the red sequence galaxies between clusters at different redshifts demanded a k -correction of the magnitudes. We computed the k -correction of the UV–optical magnitudes using two-component stellar population modeling. This involved matching the observed photometric spectral energy distributions (SEDs) with composite model SEDs made up of young and old stellar populations. In our modeling, the old population was fixed as a 12 Gyr old stellar population. We constructed model SEDs using the models of *Starburst99* (Leitherer et al. 1999) for young stellar populations and the models of Yi (2003) for an old stellar population by varying the age and mass fraction of the young stellar component as well as the internal extinction. Both stellar populations had a solar metallicity. The best match between an observed SED and a model SED was found with a χ^2 test. We derived the k -correction terms by comparing the magnitudes from the best-fit model at the spectroscopic redshift of a galaxy and another one shifted to the rest frame. For more details on the two-component stellar population modeling, please refer to Sheen et al. (2009). Figure 3 shows the combined UV–optical CMRs of the four clusters before and after the k -correction. In order to see the effect of the k -correction in this study with galaxies at $z \lesssim 0.1$ and to compare it with other studies that did not apply k -correction to the galaxy UV–optical colors, we derived the RSF fractions of both subsamples with and without k -correction. In the following section, however, we discuss only the results of the k -corrected samples, unless stated otherwise.

One of the conventional selection criteria for quiescent galaxies has been $\text{NUV} - r' > 5.4$, based on the $\text{NUV} - r'$ color of a representative UV upturn galaxy, NGC 4552 (Yi et al. 2005; Kaviraj et al. 2007). Jeong et al. (2009) later suggested $\text{NUV} - r' \leq 5$ as a conservative limit for selecting RSF galaxies. Crossett et al. (2014) tested the two criteria using post-starburst galaxies and found that a post-starburst galaxy appeared redder than $\text{NUV} - r' = 5$. According to Figure 3, however, the majority of red sequence galaxies appeared to reside at $5 < \text{NUV} - r' < 6$ after k -correction. Since those $\text{NUV} - r'$

cuts were empirical suggestions, we present the results for both criteria in order to avoid a bias from ambiguous RSF criteria.

The RSF fractions of the RSVL samples were calculated using different criteria based on the morphological signatures (post-mergers versus normal/featureless galaxies), k -correction (k -corrected versus not k -corrected), $\text{NUV} - r'$ cuts ($\text{NUV} - r' = 5.4$ or 5), and distances from the cluster center (RSVL samples in the full MOSAIC II field of view versus RSVL within $0.5 \times R_{200}$ of each cluster). Table 2 shows the averages of the RSF fractions from the four Abell clusters (the fractions of each cluster are presented in the Appendix). On average, about 36% of the post-merger galaxies showed RSF signatures with $\text{NUV} - r' \leq 5$. This was about 40% larger than the fraction of the normal galaxies ($\sim 26\%$). When applying $\text{NUV} - r' = 5.4$ as the RSF criterion, the fractions almost doubled in both subsamples. The ratio of the fractions between the post-merger galaxies and the normal galaxies was ~ 1.4 regardless of the RSF criterion. Following k -correction, the galaxy colors typically became bluer in the UV–optical bands. Therefore, the RSF fraction was slightly higher after the k -correction. Our target clusters covered slightly different areas in the optical data as they were located at different redshifts within $z \lesssim 0.1$. Therefore, we also checked the RSF fractions for galaxies within $0.5 \times R_{200}$ of each cluster. As shown in Table 2, we could not find significant differences in the average RSF fractions of the galaxies within $0.5 \times R_{200}$ as compared to the fractions using all RSVL samples.

A schematic view of the RSF fractions is presented in Figure 4. The RSF fractions are plotted along with the different RSF criteria for post-merger galaxies and normal galaxies. The solid lines are used to represent all RSVL samples and the dashed lines are for the samples within $0.5 \times R_{200}$. The post-merger galaxies showed a slight lack of UV–bright ($\text{NUV} - r' \leq 5$) galaxies in the central region. Although the errors are large, this makes sense, as most post-merger galaxies may have gone through galaxy mergers at the cluster outskirts. The merger-induced star formation is probably quenched (by environment) and their stellar populations have aged during the dynamical friction time of the galaxy with respect to the cluster.

4. PROPERTIES OF RSF GALAXIES

4.1. Morphology

The galaxy samples were selected based on their optical colors. The previous section, however, showed that UV–optical colors spanned a wide range. We considered the way the post-merger features differed according to the UV–optical colors. Post-merger features were identified in Sheen et al. (2012) using disturbed features, e.g., asymmetric structures, faint features, discontinuous halo structures, rings, and dust lanes.

To begin with, we examined the appearance of post-merger galaxies. Thumbnail images of the post-merger galaxies are presented within a plot of $\text{NUV} - r'$ colors versus M_r in Figure 5. The galaxies were divided into three groups of $\text{NUV} - r'$ colors based on the two RSF criteria used in this paper (red lines in the figure). We found that galaxies at $\text{NUV} - r' < 4$ displayed very asymmetric shapes and blue spots from RSF. In the $4 < \text{NUV} - r' < 5$ range, the galaxy morphologies appeared more symmetric, some showing thick bar structures or ring structures. Massive elliptical galaxies within this color range showed faint structures such as shells or filamentary structures in their halos. In the $5 < \text{NUV} - r' < 5.4$ range, blue spots were no longer found in the galaxies. Most of them showed elliptical

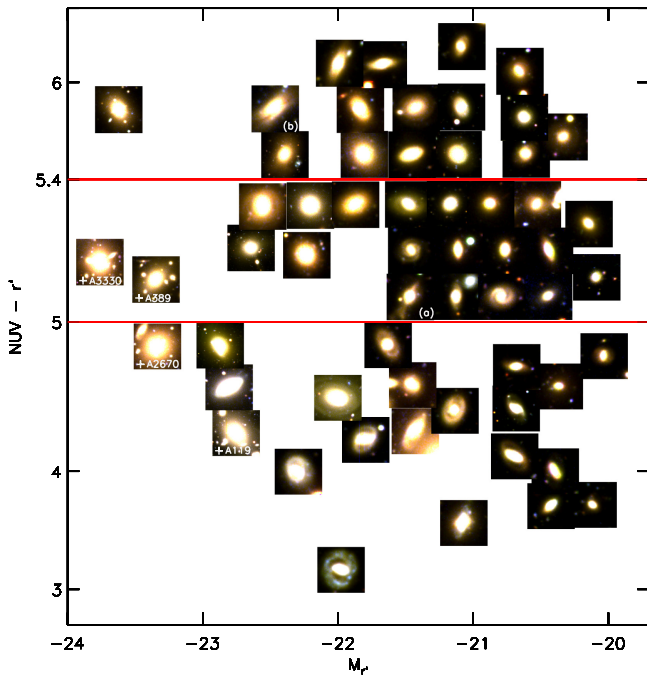


Figure 5. Thumbnail images of post-merger galaxies in red sequences of A119, A2670, A3330, and A389. Red lines indicate the RSF criteria used in this paper ($\text{NUV} - r' = 5$ and 5.4). The four BCGs are marked with crosses in the bottom left corner of the thumbnails. Panel (a) is a galaxy with a violent post-merger feature in the color range of $5 < \text{NUV} - r' \leq 5.4$. Panel (b) shows a dusty disk structure along with a faint structure which spreads beyond the area of this thumbnail image. Please refer to Section 4.1 for those galaxies. The galaxies’ positions in the diagram had to be adjusted to avoid overlaps, and the image scale for the brightest galaxies is different. Post-merger features were identified in Sheen et al. (2012) using disturbed features, e.g., asymmetric structures, faint features, discontinuous halo structures, rings, and dust lanes. The images have been provided to show the galaxies’ overall optical colors and morphology rather than their post-merger features. The features are sometimes very faint and spread over a wide area, making it complicated to show them in the color composite images.

shapes, while some of them presented short spiral structures. A violently disturbed galaxy that was likely to be a remnant of a galaxy merger between gas-poor galaxies was also found in this range (panel (a) in Figure 6). In the $\text{NUV} - r' > 5.4$ range, most of the post-merger galaxies seemed to be bulge-dominated regardless of their stellar masses. One massive galaxy showing a dusty disk and disturbed faint features may have been an obscured post-merger galaxy with high internal extinction (panel (b) in Figure 6).

We calculated the bulge-to-total (B/T) ratios for all the red sequence galaxies in Sheen et al. (2012) to verify that our post-merger classification had not been affected by the spiral structure of the late-type galaxies. To derive the B/T ratios, we measured the radial surface brightness profiles of the galaxies using the ellipse task in IRAF. A least-squares fitting of the profiles was performed with a composite model of a de Vaucouleurs’ profile and an exponential profile using IDL routines from the MPFIT package. The best-fit model was chosen using the minimum χ^2 method. From the models, we calculated the B/T ratios of the galaxies. For more details on the B/T calculations, please refer to Sheen et al. (2012).

We compared the average B/T ratios of the red sequence galaxies as a function of the $\text{NUV} - r'$ colors and the M_r . Only the RSVL samples with $\bar{\chi}^2 \leq 2$ were included. Before considering the B/T ratios, Figure 6(a) shows the post-merger fractions among the RSVL galaxies in a $\text{NUV} - r'$ versus M_r

grid. It suggests that (1) the post-merger fractions of more massive galaxies are larger, and (2) all massive RSF galaxies ($M_r < -22$ and $\text{NUV} - r' \leq 5$) show post-merger features. Figure 6(b) shows the average B/T ratios for the post-merger galaxies. The post-merger samples were mostly “bulge-dominated” ($\text{B/T} > 0.4$ for E/S0 galaxies, following Somerville & Primack 1999). However, it should be noted that no robust profile fitting was obtained for about half of the UV-bright post-merger galaxies due to their asymmetric structures, as shown in Figure 5. The average B/T ratios for the normal galaxies are presented in Figure 6(c). In general, their average B/T ratios were smaller than those of the post-merger galaxies in the same bin. As shown in Table 2, we found that the RSF fractions for normal, featureless red sequence galaxies were also large (up to 50% with $\text{NUV} - r' \leq 5.4$). We considered the possibility that this may have been caused by passive spirals being included in optical red sequences. However, passive spirals did not seem to be the primary origin of those UV-bright normal galaxies, as their average B/T ratios were too large for them to be considered spiral galaxies. Interestingly, “disk-dominated” galaxies were found in the very red UV–optical color bins ($6 \leq \text{NUV} - r' < 7$). These most likely were late-type galaxies with high internal extinction.

4.2. UV Upturn

The UV–optical color–color diagrams were also examined to check the UV upturn phenomenon in the red post-merger galaxies. Among the RSVL samples, 189 galaxies (142 normal, 47 post-merger) were detected in both the FUV and NUV *GALEX* bands. The UV–optical color–color diagrams are presented in Figure 7. Demarcation lines were adopted from Yi et al. (2011) to select candidates for the UV upturn galaxies. About 4% (2/47) of the post-merger galaxies were classified as UV upturn galaxies, while about 11% (16/142) of the normal galaxies showed UV upturn features in this diagram (without correction from non-detections in the FUV). The smaller UV upturn fraction among the post-merger galaxies may have been a consequence of the larger RSF fractions among them, which hid the FUV excess from the evolved stellar systems.

Yi et al. (2011) showed that UV upturn is not a common phenomena at $z < 0.1$ using SDSS galaxy clusters. Hernández-Pérez & Bruzual (2014) suggested that binary star populations of very low metallicity can show UV–optical colors in the RSF regime. However, a typical metallicity distribution would not expect a substantial fraction of metal-poor stars (e.g., Kodama & Arimoto 1997). Therefore, UV upturn is negligible in this study.

4.3. Spatial Distributions

Figure 8 presents the RSF fractions as functions of the clustocentric distance in R_{200} units using RSF criteria of $\text{NUV} - r' = 5.4$ (upper panels) and $\text{NUV} - r' = 5$ (bottom panels). The RSF fractions for the post-merger galaxies did not show any particular trend within R_{200} under either of those RSF criteria. This may indicate that post-merger RSF galaxies are randomly located within R_{200} of a cluster, matching the results for the dependence of post-merger fractions on the distance from the cluster center in Sheen et al. (2012). In that study, it was shown that the fraction of UV-bright ($\text{NUV} - r' \leq 5$) normal galaxies was large at the cluster outskirts ($R > R_{200}$). However, the number of galaxies at that distance in this study’s sample was too small to be conclusive.

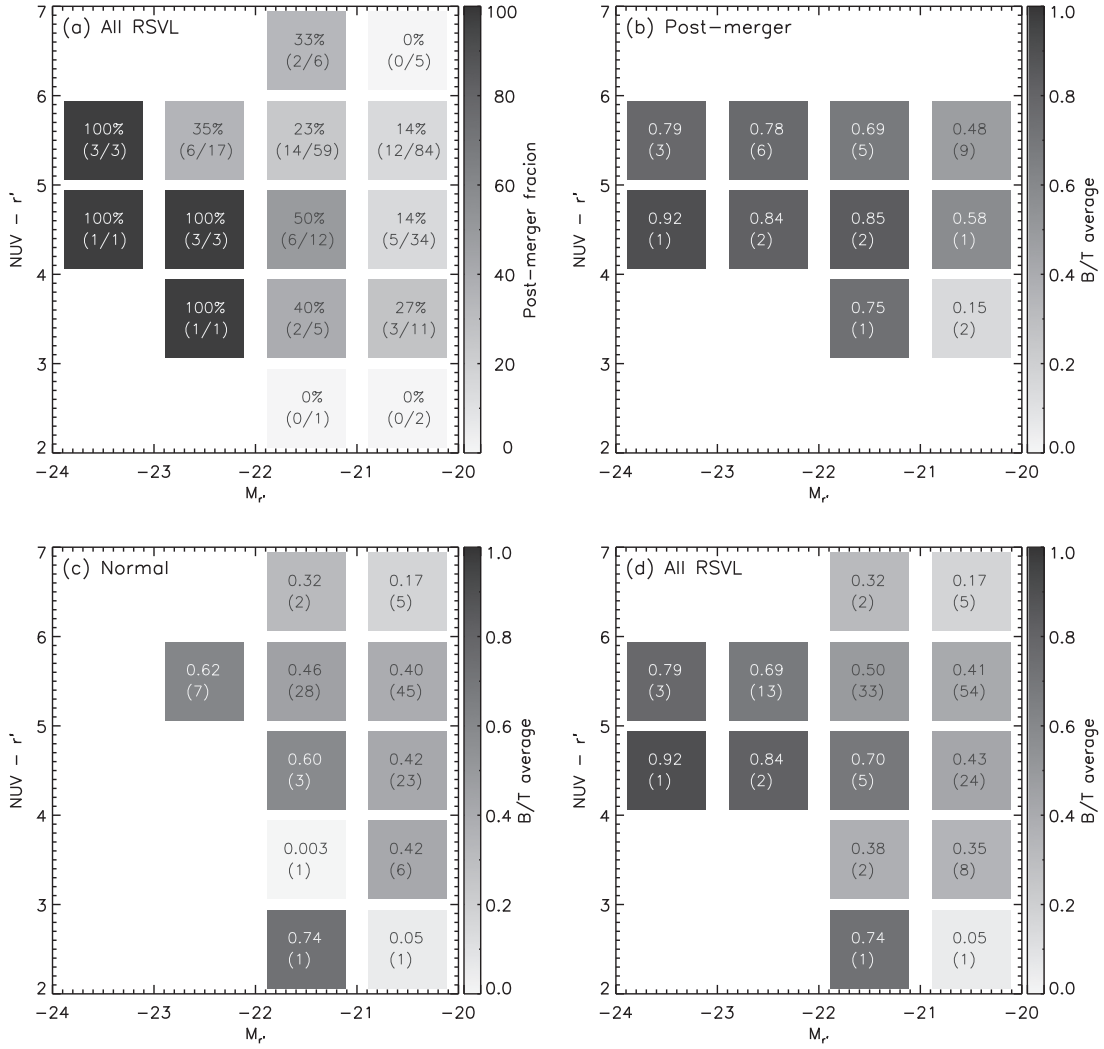


Figure 6. Panel (a) Post-merger fractions for red sequence galaxies presented in grid of M_r and $NUV - r'$ colors. The numbers of post-merger galaxies and red sequence galaxies located in each bin are also given in parentheses. Panel (b) Average bulge-to-total (B/T) ratios of post-merger galaxies calculated for each bin. Only galaxies with $\bar{\chi}^2 \leq 2$ were included in the calculation, and the number of galaxies is shown in the parentheses. Panel (c) Average B/T ratios of normal, featureless galaxies. Panel (d) Average B/T ratios for all red sequence galaxies ($\bar{\chi}^2 \leq 2$).

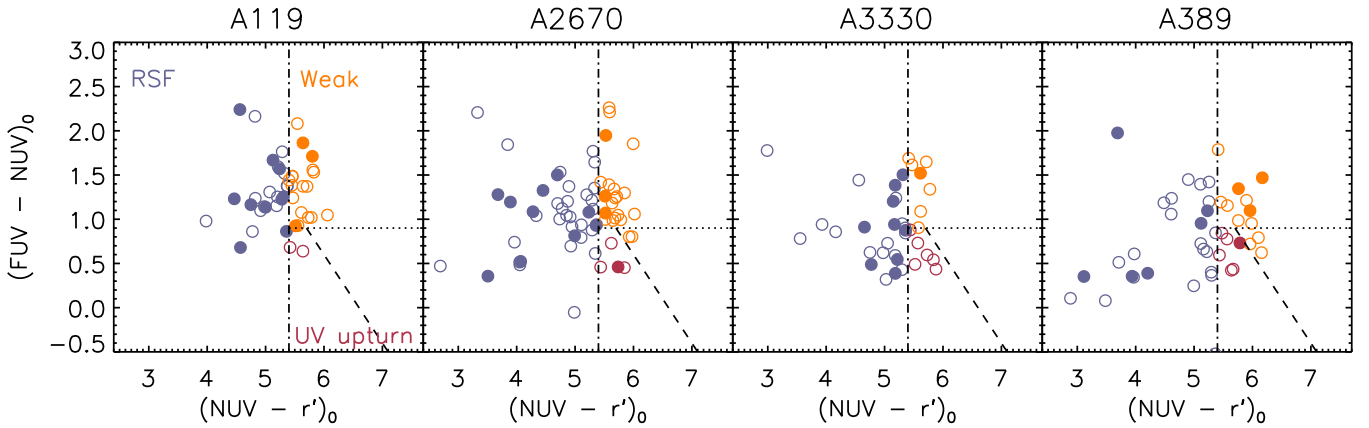


Figure 7. UV-optical color-color diagrams of clusters. The demarcation lines used to divide the RSF, UV upturn, and UV-weak regions were adopted from Yi et al. (2011). The RSF galaxies are shown with blue symbols, while the UV upturn galaxies and UV-weak galaxies are represented by red and orange symbols, respectively. Filled circles indicate post-merger galaxies.

We performed a Dressler-Shectman test (Dressler & Shectman 1988) to identify substructures within the clusters. Substructures found in clusters may indicate that they have

infalled to a central cluster at relatively recent epoch. As a group environment induces more active evolutionary processes (e.g., galaxy mergers and star formation), in general, the correlation of

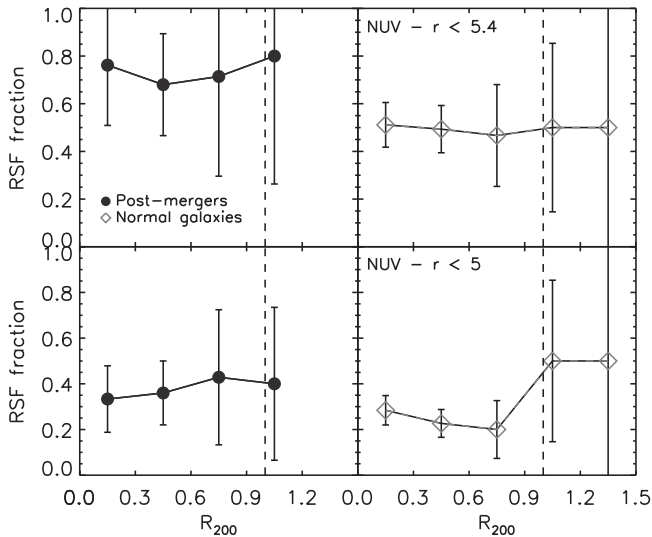


Figure 8. RSF fractions against the clustocentric distance in units of R_{200} for post-merger galaxies (filled circles) and normal galaxies (open diamonds). The bin size was $0.3 R_{200}$. The upper panels show the RSF fractions for the $NUV - r' = 5.4$ cut while the bottom panels present the results for $NUV - r' = 5$. The dashed vertical line indicates $1 \times R_{200}$.

the distribution of RSF galaxies with substructures is worthy of confirmation. In short, the DS test was used to compare the local velocity and velocity dispersion for each galaxy with the global values. Using the spectroscopic members of each cluster, we first computed the mean velocity (\bar{v}_{cl}) and the velocity dispersion (σ_{cl}). The mean velocity \bar{v}_{local}^i and velocity dispersion σ_{local}^i of the 10 nearest neighbors were also computed for each galaxy i . These quantities were then combined to compute the individual galaxy deviations (δ_i), as follows:

$$\delta_i^2 = \left(\frac{10 + 1}{\sigma_{cl}^2} \right) [(\bar{v}_{local}^i - \bar{v}_{cl})^2 + (\sigma_{local}^i - \sigma_{cl})^2]. \quad (1)$$

The substructure candidates were initially identified using δ_i values and were then confirmed through visual inspection of their spatial and velocity distributions. If more than four galaxies with $\delta_i > 2$ lie close to one another in terms of position and radial velocity, we selected them as a possible substructure. For more details, we refer readers to Jaffé et al. (2013). The distribution of the cluster members and possible group candidates is presented in Figure 9. Since we were looking mostly within R_{200} , we could not identify many robust substructures except for Abell 389, the furthest cluster sample, at $z = 0.112$. We inspected whether the RSF galaxies had any preference for lying in substructures. As shown in Figure 9, however, neither post-merger galaxies nor post-merger RSF galaxies were preferentially found in the substructures.

5. SUMMARY AND DISCUSSION

This study explored the *GALEX* UV properties of optical red sequence galaxies in four rich Abell clusters at $z \leq 0.1$. In particular, we tried to find a hint of merger-induced RSF in the red sequence galaxies. Using the $NUV - r'$ colors of the galaxies, RSF fractions were derived based on various criteria for post-merger galaxies and normal galaxies. Following k -correction, about 36% of the post-merger galaxies were classified as RSF galaxies with a conservative RSF criterion

($NUV - r' \leq 5$), and that number was doubled ($\sim 72\%$) when using a generous criterion ($NUV - r' \leq 5.4$). The trend was the same when the sample was limited to galaxies within $0.5 \times R_{200}$. Post-merger galaxies with strong UV emission were found to show more violent, asymmetric features in the deep optical images. The RSF fractions did not show any trend along the clustocentric distance within R_{200} . A Dressler-Shectman test was carried out to check whether the RSF galaxies had any correlation with substructures in the galaxy clusters. We could not identify many substructures from our clusters as the data only effectively included areas within R_{200} . Within our given field of view, the RSF galaxies did not appear to be preferentially related to the clusters' substructures.

The 30% of RSF fraction among the RSVL galaxies in galaxy clusters is what we have found through this study. The result is comparable with what Kaviraj et al. (2007) found, at least 30% of a RSF fraction among ~ 2100 early-type galaxies across a wide range of environments. Fitzpatrick & Graves (2015) also looked into $\sim 29,000$ nearby early-type galaxies from SDSS and found that their star formation histories are mostly determined by structural parameters, not by environments. These results suggest that current environment where an early-type galaxy sits in is not a critical factor to determine its star formation history.

Although the RSF fraction of post-merger galaxies seemed larger than that of normal galaxies, only 30% (21/70) of RSF galaxies among the optical red sequence galaxies showed post-merger signatures in the deep optical images. The remaining 70% of UV-bright red sequence galaxies did not show morphologically disturbed features, and they mostly populated the less massive end of the sample's mass range ($-21 \leq M_r < -20$). It is possible that the study may have missed minor merger features in these galaxies from the deep optical images, as post-merger features become more difficult to detect as the galaxy magnitude gets fainter. It has been claimed through a series of papers (Kaviraj et al. 2009, 2011; Crockett et al. 2011; Kaviraj 2014) that minor merger has a significant role in the RSF in early-type galaxies. Also, Ji et al. (2015) reported that they could not see merger features from a 1:10 merger simulation with a given imaging depth which is comparable to ours. However, considering the timescale difference for the fading of morphological merger features (~ 4 Gyr) and the young stellar populations (~ 1 Gyr), the fraction of RSF red sequence galaxies without disturbed features was still significantly large. We also confirmed that those featureless RSF galaxies were mostly bulge-dominated, early-type galaxies and so they have a low chance of being a passively evolving spiral galaxy. Our results imply that there may be other and perhaps more influential channels triggering residual star formation in early-type galaxies.

If recent galaxy merger is not a predominant driver of residual star formation in red sequence galaxies, another possible explanation may be gas cooling from internal processes. The source of cold gas for early-type galaxies remains an open question. According to theoretical studies (Kimm et al. 2011; Lagos et al. 2014; Vijayaraghavan & Ricker 2015), external sources may be gas accretion from minor mergers and internal processes may be stellar mass loss or hot gas cooling. Lagos et al. (2014) concluded by comparison of semi-analytic models to observations of gas in early-type galaxies that more than 90% of neutral gas contents were supplied by radiative cooling from hot halos, 8% by gas accretion from minor mergers, and 2% by mass loss from old stars. Vijayaraghavan & Ricker (2015) simulated

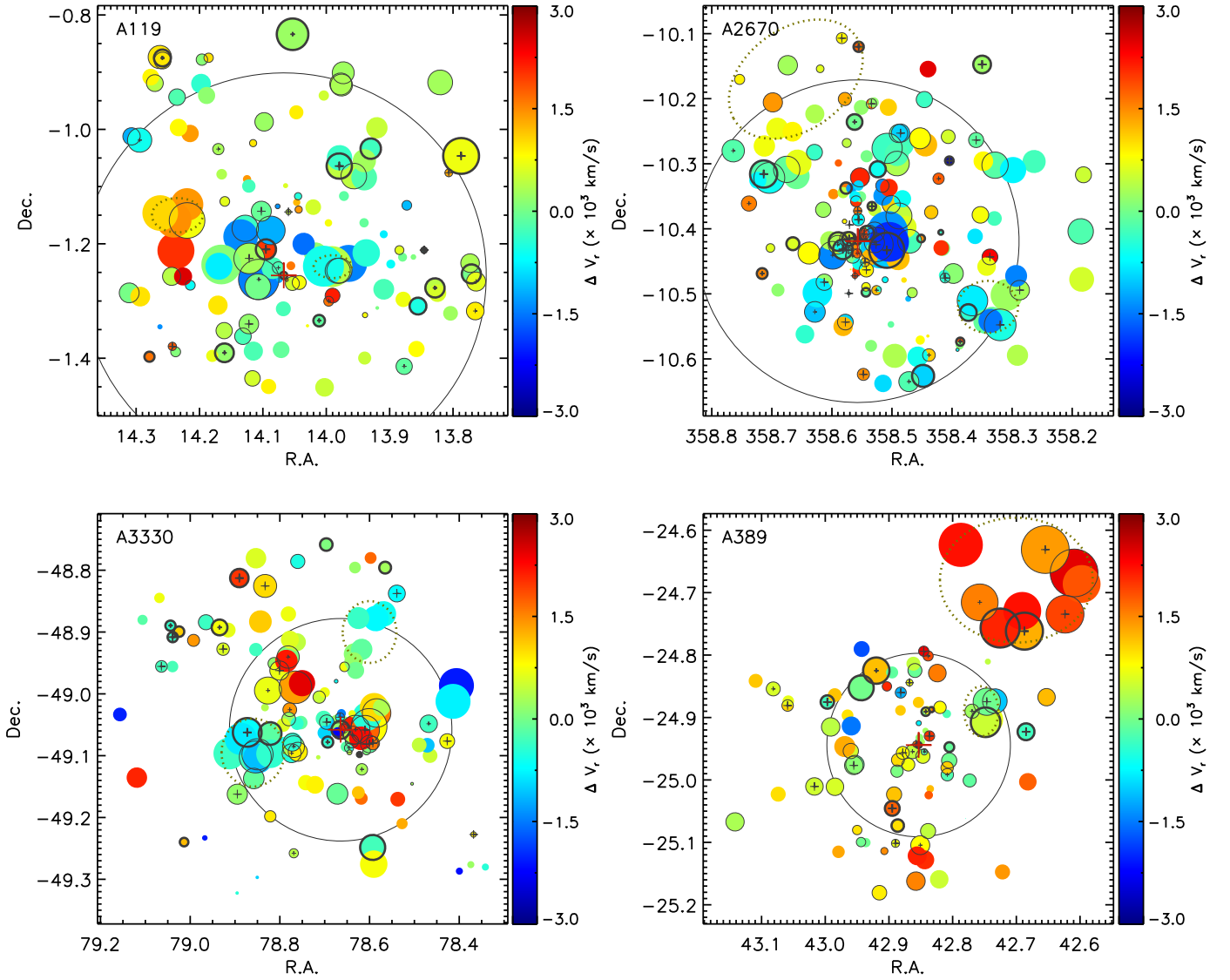


Figure 9. Spatial distribution of all spectroscopic members in each cluster. The sizes of the filled circles show the δi values from the Dressler–Schechter test and are color coded according to their radial velocity centered at the median velocity of the cluster. The possible substructures were carefully selected using galaxies with large Δi values ($\Delta i \geq 2$), while also considering their spatial distributions and radial velocity histograms (dotted ellipses). The RSVL samples and RSF galaxies are represented with open gray circles and gray crosses in the center of the circles. The post-merger galaxies are represented with thicker gray symbols. The small crosses indicate galaxies with weak RSF signatures ($5 < \text{NUV} - r' < 5.4$). The location of the BCG is marked with a red cross and a half-virial radius ($0.5 \times R_{200}$) of each cluster is drawn with a circle in background. These plots suggest that the post-merger galaxies and RSF galaxies were not particularly related to the substructures.

ram pressure stripping of hot gas from galaxies in cluster environment and suggested that stripped gas can be confined in a galaxy’s gravitational potential in the form of tail. Therefore, it is possible that the 70% of featureless RSF galaxies in this study may be mainly fueled by their hot halos.

According to the result, it seems that post-merger feature in low surface brightness is not a critical hint for RSF in red sequence galaxies. Therefore, NUV excess still remains as a powerful tool to effectively find RSF in early-type galaxies.

This study is focused on the photometric properties of galaxies. A future study that makes use of spectroscopic data with adequate signal-to-noise ratios will be useful to address the effect of weak active galactic nucleus on RSF in elliptical galaxies, as suggested by Valentini & Brighenti (2015), and to derive various star-formation-related properties.

We thank the anonymous referee for constructive comments and suggestions. S.K.Y. acted as the project leader and a

corresponding author. Y.K.S. acknowledges support from FONDECYT Postdoctoral Fellowship (No. 3130470) by CONICYT. S.K.Y. acknowledges support from the Korean National Research Foundation (NRF-2014R1A2A1A01003730). Y.J. acknowledges support from the Marie Curie Actions of the European Commission (FP7-COFUND). R.D. gratefully acknowledges the support provided by the BASAL Center for Astrophysics and Associated Technologies (CATA), and by FONDECYT grant No. 1130528. E.T. acknowledges support from CONICYT Anillo ACT1101.

Facilities: GALEX, Blanco (MOSAIC 2 CCD Imager).

APPENDIX

This appendix contains the table of RSF fractions (Table 3).

Table 3
RSF Fractions2 (in Percentages)^a

Samples	Cluster ID	w/ k -correction		w/o k -correction	
		NUV $- r' \leq 5.4$	NUV $- r' \leq 5$	NUV $- r' \leq 5.4$	NUV $- r' \leq 5$
Post-merger	A119	76.9 (10/13)	38.5 (5/13)	69.2 (9/13)	30.8 (4/13)
	A2670	72.2 (13/18)	50.0 (9/18)	66.7 (12/18)	44.4 (8/18)
	A3330	78.6 (11/14)	21.4 (3/14)	57.1 (8/14)	21.4 (3/14)
	A389	61.5 (8/13)	30.8 (4/13)	53.8 (7/13)	30.8 (4/13)
	Average	72.4 (42/ 58)	36.2 (21/ 58)	62.1 (36/ 58)	32.8 (19/ 58)
Normal galaxies	A119	40.0 (16/40)	17.5 (7/40)	32.5 (13/40)	15.0 (6/40)
	A2670	54.0 (34/63)	33.3 (21/63)	44.4 (28/63)	25.4 (16/63)
	A3330	53.8 (21/39)	25.6 (10/39)	48.7 (19/39)	25.6 (10/39)
	A389	50.0 (22/44)	25.0 (11/44)	40.9 (18/44)	22.7 (10/44)
	Average	50.0 (93/186)	26.3 (49/186)	41.9 (78/186)	22.6 (42/186)
Post-merger ($<0.5 R_{200}$)	A119	72.7 (8/11)	36.4 (4/11)	63.6 (7/11)	36.4 (4/11)
	A2670	68.8 (11/16)	43.8 (7/16)	62.5 (10/16)	37.5 (6/16)
	A3330	100 (4/4)	0.0 (0/4)	75.0 (3/4)	0.0 (0/4)
	A389	55.6 (5/9)	11.1 (1/9)	44.4 (4/9)	11.1 (1/9)
	Average	70.0 (28/ 40)	30.0 (12/ 40)	60.0 (24/ 40)	27.5 (11/ 40)
Normal galaxies ($<0.5 R_{200}$)	A119	42.9 (15/35)	20.0 (7/35)	37.1 (13/35)	17.1 (6/35)
	A2670	53.8 (28/52)	32.7 (17/52)	46.2 (24/52)	25.0 (13/52)
	A3330	56.5 (13/23)	21.7 (5/23)	52.2 (12/23)	21.7 (5/23)
	A389	51.7 (15/29)	24.1 (7/29)	37.9 (11/29)	20.7 (6/29)
	Average	51.1 (71/139)	25.9 (36/139)	43.2 (60/139)	21.6 (30/139)
All RSVL	Average	55.3 (135/244)	28.7 (70/244)	46.7 (114/244)	25.0 (61/244)
All RSVL ($<0.5 R_{200}$)	Average	55.3 (99/179)	26.8 (48/179)	46.9 (84/179)	22.9 (41/179)

Note.^a Galaxy counts are presented in the parentheses.

REFERENCES

- Bertin, E., & Arnouts, S. 1996, *A&AS*, **117**, 393
Crockett, R. M., Kaviraj, S., Silk, J. I., et al. 2011, *ApJ*, **727**, 115
Crossett, J. P., Pimblett, K. A., Stott, J. P., & Heath Jones, D. 2014, *MNRAS*, **437**, 2521
Dressler, A., & Shectman, S. A. 1988, *AJ*, **95**, 985
Fabbiano, G., & Schweizer, F. 1995, *ApJ*, **447**, 572
Fitzpatrick, P. J., & Graves, G. J. 2015, *MNRAS*, **447**, 1383
Hernández-Pérez, F., & Bruzual, G. 2014, *MNRAS*, **444**, 2571
Jaffé, Y. L., Poggianti, B. M., Verheijen, M. A. W., Deshev, B. Z., & van Gorkom, J. H. 2013, *MNRAS*, **431**, 2111
Jeong, H., Yi, S. K., Bureau, M., et al. 2009, *MNRAS*, **398**, 2028
Ji, L., Peirani, S., & Yi, S. K. 2015, *A&A*, **566**, 97
Kaviraj, S. 2014, *MNRAS*, **437**, L41
Kaviraj, S., Peirani, S., Khochfar, S., Silk, J., & Kay, S. 2009, *MNRAS*, **394**, 1713
Kaviraj, S., Schawinski, K., Devriendt, J. E. G., et al. 2007, *ApJS*, **173**, 619
Kaviraj, S., Tan, K.-M., Ellis, R. S., & Silk, J. 2011, *MNRAS*, **411**, 2148
Kimm, T., Yi, S. K., & Khochfar, S. 2011, *ApJ*, **729**, 11
Kodama, T., & Arimoto, N. 1997, *A&A*, **320**, 41
Lagos, C. P., Davis, T. A., Lacey, C. G., et al. 2014, *MNRAS*, **443**, 1002
Leitherer, C., Schaerer, D., Goldader, J. D., et al. 1999, *ApJS*, **123**, 3
Martin, D. C., Fanson, J., Schiminovich, D., et al. 2005, *ApJL*, **619**, L1
Mathews, W. G., & Brighenti, F. 2003, *ApJL*, **590**, L5
O'Sullivan, E., Forbes, D. A., & Ponman, T. J. 2001, *MNRAS*, **324**, 420
Ree, C. H., Lee, Y.-W., Yi, S. K., et al. 2007, *ApJS*, **173**, 607
Salim, S., & Rich, R. M. 2010, *ApJL*, **714**, L290
Schlegel, D. J., Finkbeiner, D. P., & Davis, M. 1998, *ApJ*, **500**, 525
Sheen, Y.-K., Jeong, H., Yi, S. K., et al. 2009, *AJ*, **138**, 1911
Sheen, Y.-K., Yi, S. K., Ree, C. H., & Lee, J. 2012, *ApJS*, **202**, 8
Somerville, R. S., & Primack, J. R. 1999, *MNRAS*, **310**, 1087
Valentini, M., & Brighenti, F. 2015, *MNRAS*, **448**, 1979
Vijayaraghavan, R., & Ricker, P. M. 2015, *MNRAS*, **449**, 2312
Wyder, T. K., Treyer, M. A., Milliard, B., et al. 2005, *ApJL*, **619**, L15
Yi, S. K. 2003, *ApJ*, **582**, 202
Yi, S. K., Lee, J., Sheen, Y.-K., et al. 2011, *ApJS*, **195**, 22
Yi, S. K., Yoon, S.-J., Kaviraj, S., et al. 2005, *ApJL*, **619**, L111