

The following supplement accompanies the article

Water nutrient stoichiometry modifies the nutritional quality of phytoplankton and somatic growth of crustacean mesozooplankton

Beatriz Díez^{1,2,*}, Lies Van Nieuwerburgh³, Pauline Snoeijs⁴

¹Department of Botany, Stockholm University, 10691 Stockholm, Sweden

²Department of Molecular Genetic and Microbiology, Faculty of Biological Sciences, Pontificia Universidad Católica de Chile, C.P. 651 3677, Santiago, Chile

³Royal Haskoning DHV, 9702 KB Groningen, The Netherlands

⁴Department of Ecology, Environment and Plant Sciences, Stockholm University, 10691 Stockholm, Sweden

*Email: bdiez@bio.puc.cl

Marine Ecology Progress Series 489: 93–105 (2013)

Fig. S1. Phylogenetic reconstruction of the 18S rRNA partial sequences retrieved for eukaryotic DGGE bands in this study (in bold). The numbers used are the same as in the DGGE profile in Fig. 3

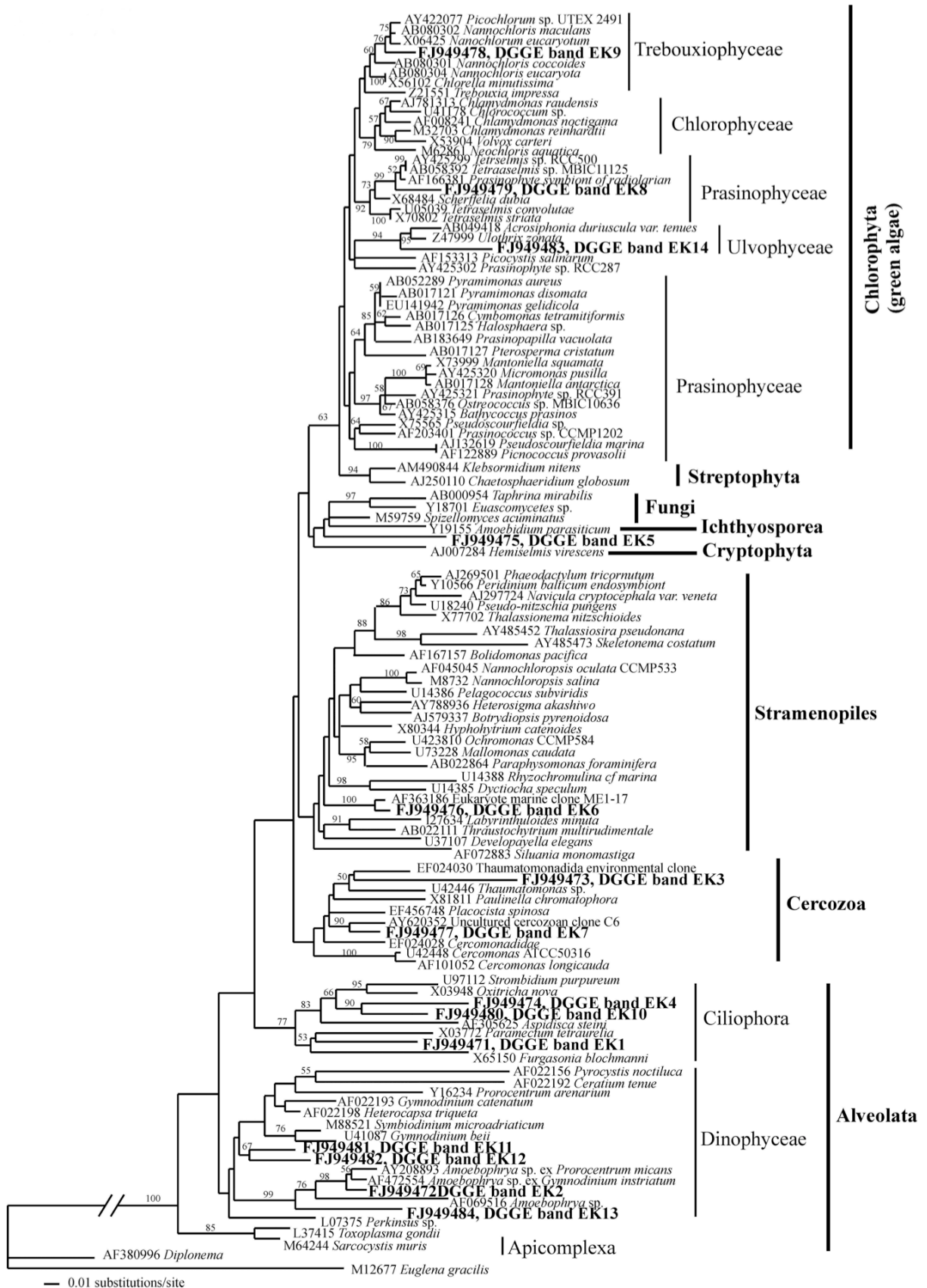


Fig. S2. Phylogenetic reconstruction of the 18S rRNA partial sequences retrieved for chlorophytes specific DGGE bands in this study (in bold). The numbers used are the same as in the DGGE profile in Fig. 3

